



Safety & Compliance Training Requirements for Communications Work on Victorian Electricity Supply Industry (VESI) Network Operator Assets

This guideline has been developed by the Victorian Electricity Supply Industry (VESI) Skills and Training Reference Committee (STRC)

*In the Victorian
Electricity Supply
Industry*

March 2024

DATE	VERSION	AMENDMENT	NAME
MARCH 2011	1		VESI STRC
DECEMBER 2013	2	<p>REFORMATTED DOCUMENT TO VESI TEMPLATE</p> <p>UPDATED DEFINITIONS FOR LOW AND HIGH VOLTAGE</p> <p>INCLUDED REQUIREMENTS WHEN NATIONAL QUALIFICATION AND COMPETENCIES AND THERE UNIT NUMBERS ARE CHANGED</p> <p>UPDATED TRAINING REQUIREMENTS TABLE WITH NEW NATIONAL COMPETENCY STANDARD UNIT NUMBERS</p>	VESI STRC
JULY 2014	3	ADDED POLE TOP RESCUE – UETTDRRF02B (IF WORKING FROM A LADDER) TO TELECOMMUNICATIONS CORRIDOR WORKER	VESI STRC
MARCH 2024	4	<p>CHANGED DOCUMENT NAME FROM TELECOMMUNICATIONS TO COMMUNICATIONS TO INCLUDE ALL COMMUNICATON EQUIPMENT</p> <p>UPDATE OF GENERAL CONTENT TO INCLUDE ALL COMMUNICATION EQUIPMENT</p> <p>ADDED DEFINITIONS FOR:</p> <ul style="list-style-type: none"> • COMMUNICATION ASSETS • COMMUNICATION WORKER • COMMUNICATION COMPANY <p>UPDATED UNIT OF COMPETENCY NAMES & CODES</p> <p>ADDED TABLE 2 - COMPETENCY RE-ASSESSMENT / REFRESHER TRAINING REQUIREMENTS</p>	VESI STRC

Contents

INTRODUCTION.....	3
1. <u>PURPOSE</u>	3
2. <u>SCOPE</u>	3
3. <u>RESPONSIBILITIES</u>	4
<u>Network Operator</u>	4
<u>Employer</u>	4
<u>Worker</u>	4
4. <u>DEFINITIONS</u>	4
5. <u>WORK ENVIRONMENT</u>	5
<u>Power Corridor</u>	5
<u>Communications Corridor</u>	5
<u>Ground Work</u>	5
6. <u>TRAINING REQUIREMENTS</u>	6
<u>Table 1</u>	6
<u>Table 2</u>	7

Introduction

Communication assets have co-existed on the overhead electricity network for many years and in more recent years pay television cables, fibre optic cables and mobile phone network equipment have been installed.

The Victorian Electricity Supply Industry (VESI) Network Operators have established this common set of training requirements for third party providers engaged in the installation of communication assets/equipment on network operator assets.

These training requirements have been developed and established by the VESI, Skills and Training Reference Committee (STRC). Any departures from these requirements can only be made with the agreement of the host Network Operator.

This document supplements any company specific requirements relating to induction, training, safety and/or any specific requirements described in the VESI Shared Use of Poles Code and in any related Facilities Access Agreement (FAA).

1. Purpose

This document has been developed to describe the safety and compliance training requirements for the undertaking of communications work on, or in proximity to Network Operator assets by third party providers.

2. Scope

This document applies to all workers performing third party communications works who are required to install and maintain communications infrastructure on Network Operator assets.

This document does not relate to workers employed by Network Operators installing or maintaining network communications systems. Where works are conducted on behalf of the Network Operator additional training requirements shall be completed prior to undertaking any work. Refer to the relevant Network Operator.

Information Communications Technology Qualifications are not covered in this document and are determined by the appropriate communications company and/or regulator.

Access to Transmission assets is subject to specific arrangements with the relevant Network Operator.

3. Responsibilities

Network Operator

- Ensure employers of communications workers working on Network Operator assets are aware of the requirements outlined in this document.

Employer

The employer shall:

- Ensure that all workers working on or in the proximity of Network Operator assets meet the training requirements outlined in this document.
- Ensure that all workers are inducted according to the Network Operators requirements.
- Maintain and make available records of training as required.
- Ensure that all workers in training are adequately supervised.

Worker

All communications workers shall:

- Be aware of and ensure that their minimum training requirements are current.
- Undertake any training and assessment as required.

4. Definitions

Communication assets	Including but not limited to cables, associated hardware, splice boxes, aerials and amplifiers.
Communication worker	Worker employed by a Communication Company or contractor to build, maintain upgrade or repair communication assets.
Communication Company	A company providing communication retail, network and or carrier solutions
Employer	A communication company or its sub-contractors who employ communication workers.
Facilities Access Agreement	An agreement signed by both parties that stipulate requirements for shared use of assets.
High Voltage (HV)	Means nominal voltage exceeding 1000 volts a.c. or exceeding 1500 volts d.c.
Low Voltage (LV)	Means nominal voltage exceeding 50 volts a.c. / 120 volts d.c. but not exceeding 1000 volts a.c. / 1500 volts d.c.
Network Operator	The owner, controller or operator of an electricity network.
Network Operator Assets	Any asset that is owned or operated by a Network Operator for the purposes of transmitting or distributing or supplying electricity.

5. Work Environment

The training requirements for each work environment are determined by referencing Acts, Codes, Engineering and Industry standards.

The clearances stated are associated with personal clearances.

The work environments are:

Power Corridor

An area within 1000mm of bare overhead LV Network Operator assets or 2000mm of bare overhead HV VESI assets (See Figures 1 & 2)

Communications Corridor

The area greater than 1000mm below bare overhead LV Network Operator assets or 2000mm below bare overhead HV Network Operator assets (See Figures 3 & 4)

Ground Work

Ground based work supporting communications asset installation in the power or communications corridor.

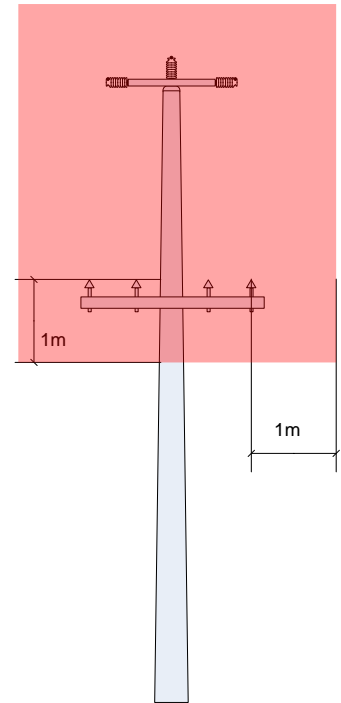


Figure 1

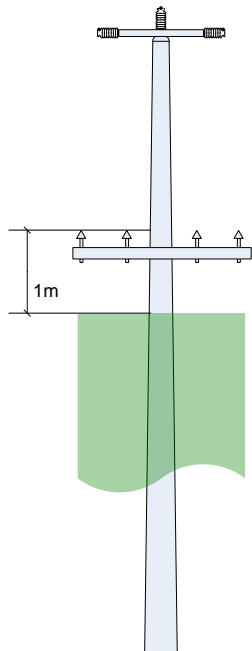


Figure 3

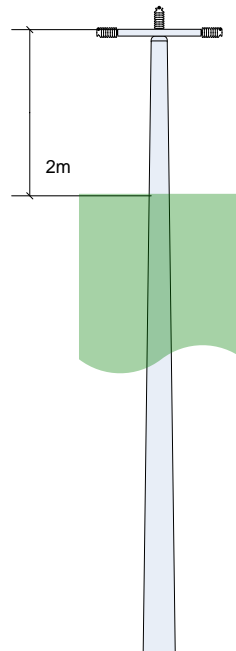


Figure 4

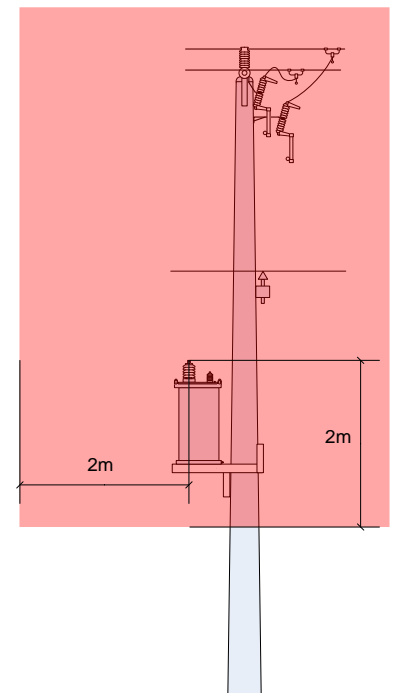


Figure 2

6. TRAINING REQUIREMENTS

The minimum training requirements for each of the environments listed above relate to electrical safety and the induction requirements of the Network Operator.

All training required by State or Federal Regulations e.g. Traffic management, Construction Induction Card (White Card) must be completed prior to any work being undertaken on Network Operator assets.

The training modules and links to national competencies for the VESI training listed in table 1 can be found in the VESI Skills and Training Guideline located on the VESI Skills and Training website www.vesi.com.au.

Previous National Qualifications and Competency Standard Units may be recognised and where the training requires Competency Assessment / Refresher training as outlined in table 2, this assessment / training will be current and meet the requirements of the new or updated unit.

Note: Where the task varies or work environment changes (e.g. HV enclosures, Single Wire Earth Return structures (SWER) there may be additional training/Induction required by the Network Operator.

Table 1

Training Requirements			
Work Environment	Power Corridor	Telecommunications Corridor	Ground Work
Qualification	Certificate III - Lineworker	Nil	Nil
Licence	Lineworker Licence - Distribution		
VESI Training	<ul style="list-style-type: none"> Provide cardiopulmonary resuscitation - HLTAID009 Provide first aid in an ESI environment - UETDRMP010 Perform elevated work platform controlled descent escape - UETDRMP004 Perform elevated work platform rescue - UETDRMP005 Safe Approach Distances Working on energised low voltage overhead electrical apparatus - UETDRMP012 Safe to Climb Perform pole top rescue - UETDRMP006 ESI safety rules for work on, near or in the vicinity of electrical apparatus - UETDRMP002 	<ul style="list-style-type: none"> Work safely in the vicinity of live electrical apparatus as a non-electrical worker - UETDREL006 Provide cardiopulmonary resuscitation - HLTAID009 Provide first aid in an ESI environment - UETDRMP010 Perform elevated work platform controlled descent escape - UETDRMP004 (if working from an EWP) Perform elevated work platform rescue - UETDRMP005 (if working from an EWP) Perform pole top rescue - UETDRMP006 (if working from a Ladder) Safe to Climb 	<ul style="list-style-type: none"> CPR - HLTAID001 First Aid in an ESI environment - UETTDRRF10B (or equivalent) Working safely near live electrical apparatus as a non-electrical worker - UETDREL14A
Network Specific	Network Operator Induction	Network Operator Induction (Where required by the Network Operator)	

Table 2

Competency Re-assessment / Refresher training	Frequency
Provide cardiopulmonary resuscitation - HLTAID009	Annually
Provide first aid in an ESI environment - UETDRMP010	Annually
Perform elevated work platform controlled descent escape - UETDRMP004	Annually
Perform elevated work platform rescue - UETDRMP005	Annually
Perform pole top rescue - UETDRMP006	Annually
Safe Approach Distances	Annually
Working on energised low voltage overhead electrical apparatus - UETDRMP012	3 yearly
Safe to Climb	3 yearly

COPYRIGHT ©2023

Copyright of this material is jointly owned by the Victorian Electricity Distribution and Transmission Businesses. All rights reserved. No part of this work may be reproduced or copied in any form or by any means (graphic, electronic or mechanical, including photocopying, recording, taping, or information retrieval systems) without the written permission of the copyright owner.